

# Placental Pathology in COVID-19

Elisheva D. Shanes, MD,<sup>1</sup> Leena B. Mithal, MD, MSCI,<sup>2</sup> Sebastian Otero,<sup>2</sup> Hooman A. Azad,<sup>3</sup> Emily S. Miller, MD, MPH,<sup>4</sup> and Jeffery A. Goldstein, MD, PhD<sup>1,\*</sup>

From the <sup>1</sup>Department of Pathology, Feinberg School of Medicine, Northwestern University, Chicago, IL; <sup>2</sup>Department of Pediatrics, Division of Infectious Diseases, Ann and Robert H. Lurie Children's Hospital of Chicago and Feinberg School of Medicine, Northwestern University, Chicago, IL; <sup>3</sup>Feinberg School of Medicine, Northwestern University, Chicago, IL; and <sup>4</sup>Department of Obstetrics and Gynecology, Division of Maternal Fetal Medicine, Feinberg School of Medicine, Northwestern University, Chicago, IL.

**Key Words:** Coronavirus; Intervillous thrombi; Maternal vascular malperfusion; Maternal vascular underperfusion; COVID-19; SARS-CoV-2; Perinatal outcomes; Placental pathology; Decidual arteriopathy

*Am J Clin Pathol* 2020;XX:0-0

DOI: 10.1093/AJCP/AQAA089

## ABSTRACT

**Objectives:** To describe histopathologic findings in the placentas of women with coronavirus disease 2019 (COVID-19) during pregnancy.

**Methods:** Pregnant women with COVID-19 delivering between March 18, 2020, and May 5, 2020, were identified. Placentas were examined and compared to historical controls and women with placental evaluation for a history of melanoma.

**Results:** Sixteen placentas from patients with severe acute respiratory syndrome coronavirus 2 (SARS-CoV-2) were examined (15 with live birth in the third trimester, 1 delivered in the second trimester after intrauterine fetal demise). Compared to controls, third trimester placentas were significantly more likely to show at least one feature of maternal vascular malperfusion (MVM), particularly abnormal or injured maternal vessels, and intervillous thrombi. Rates of acute and chronic inflammation were not increased.

The placenta from the patient with intrauterine fetal demise showed villous edema and a retroplacental hematoma.

**Conclusions:** Relative to controls, COVID-19 placentas show increased prevalence of decidual arteriopathy and other features of MVM, a pattern of placental injury reflecting abnormalities in oxygenation within the intervillous space associated with adverse perinatal outcomes. Only 1 COVID-19 patient was hypertensive despite the association of MVM with hypertensive disorders and preeclampsia. These changes may reflect a systemic inflammatory or hypercoagulable state influencing placental physiology.

## Key Points

- The placentas of women infected with severe acute respiratory syndrome coronavirus 2 (SARS-CoV-2) have higher rates of decidual arteriopathy and other maternal vascular malperfusion features associated with adverse outcomes compared to controls.
- The placentas of women infected with SARS-CoV-2 show no significant increase in acute or chronic inflammatory pathology compared to controls.
- As the placentas of women with SARS-CoV2 show reproducible histopathologic abnormalities, these findings suggest increased antenatal surveillance for women with COVID-19 may be warranted.

The impact of the severe acute respiratory syndrome coronavirus 2 (SARS-CoV-2) and the associated coronavirus disease 2019 (COVID-19) on pregnant women and infants is of particular interest to obstetricians, pediatricians, and patients. Coronaviruses are single-stranded, encapsulated RNA viruses. Most of the commonly circulating coronaviruses cause mild upper respiratory infection with occasional severe illness in immunocompromised individuals. Previous novel coronaviruses causing significant human infection include the severe acute respiratory syndrome (SARS, caused by the coronavirus SARS-CoV) from 2002 to 2004 and Middle East respiratory syndrome (MERS, caused by the coronavirus MERS-CoV) from 2012 to present. The SARS epidemic (officially ending in 2003, though sporadic cases were reported into 2004) is estimated to have involved approximately 100 pregnant women worldwide.<sup>1</sup> Several case series demonstrated that SARS infection during pregnancy was associated with severe maternal infection, increased risk of maternal death, and spontaneous abortion.<sup>2-8</sup> MERS, a primarily zoonotic infection that is transmitted between humans only via very close contact, has only been confirmed in

approximately 1,845 people since 2012. A case series of 5 women with MERS during pregnancy as well as subsequent case reports suggest that MERS is also associated with poor maternal and perinatal outcomes.<sup>2,3,9</sup>

Current case series have described clinical features and outcomes in pregnant women with COVID-19 in Wuhan, China, the original epicenter of infection.<sup>2,6,7</sup> Taken together, the body of evidence does not currently suggest that pregnant women are subject to more severe disease, in contrast to both SARS and MERS. However adverse perinatal outcomes have been reported, including increased risks of miscarriage, preeclampsia, preterm birth, and stillbirth.<sup>4</sup>

Histopathologic examination of placental tissue can contribute significant information regarding the health of both mother and fetus. A variety of viral infections in pregnancy are associated with specific placental findings, including lymphoplasmacytic villitis with associated enlargement of villi and intravillous hemosiderin deposition in the setting of maternal cytomegalovirus infection,<sup>10</sup> as well as rare reports of intervillitis in the setting of Zika virus<sup>11,12</sup> and Dengue virus,<sup>13</sup> among others.

While there are no known placental findings associated with the common coronaviruses, Ng et al<sup>14</sup> reported placental pathology in 7 women with SARS infection in Hong Kong. The placentas of 3 women who delivered while acutely ill demonstrated increased perivillous or subchorionic fibrin, while in 2 women who had recovered from third trimester infection by the time of delivery, there were large zones of avascular villi, with one of the two additionally demonstrating a large villous infarct; both contained increased nucleated RBCs in the fetal circulation. None of the 7 placentas examined had any acute or chronic inflammatory processes. While there are no histopathologic studies of placental findings in MERS, there is one report<sup>15</sup> describing placental abruption in this setting.

The current COVID-19 pandemic is still in its early stages, with preliminary case series of infection in pregnant women beginning to become available. The Chinese literature includes one report of placental findings in 3 women with COVID-19.<sup>16</sup> The authors describe increased perivillous fibrin deposition in all 3 placentas, multiple villous infarcts in 1 placenta, and a chorangioma in another case. There are 2 case reports of second trimester miscarriage in women with COVID-19 in the English language literature in which placental findings were reported.<sup>17,18</sup> In the first case, the placenta showed acute inflammation and increased perivillous fibrin.<sup>17</sup> The second case showed histiocytic intervillitis with viral spike protein in syncytiotrophoblast, demonstrated by immunohistochemistry.<sup>18</sup> There are, to the best of our

knowledge, no published case series in the English literature of placental pathology in women diagnosed with COVID-19 during pregnancy. In this report, we present placental findings in 16 women with SARS-CoV-2 infection during pregnancy and compare results to historical controls.

## Materials and Methods

### Patients

Pregnant women with COVID-19 delivering between March 18, 2020, and May 5, 2020, were identified via the electronic health record and tracked using REDCap.<sup>19</sup> From March 18, 2020, until April 7, 2020, only women with moderate to severe symptoms of COVID-19 underwent testing. After April 7, 2020, all women presenting to labor and delivery were universally tested. All patients were tested using nasopharyngeal swab placed in M4 viral transport medium. Prior to April 7, 2020, testing was performed using a laboratory-developed version of the Centers for Disease Control and Prevention (CDC) SARS-CoV-2 reverse transcription polymerase chain reaction (RT-PCR) assay.<sup>20</sup> Total RNA was extracted by Qiagen MinElute Virus Spin Kit. Reverse transcription was performed by TaqPath 1 StepRT-qPCR MM CG (A15299) using the 2019-nCoV Kit (IDT 10006606). PCR was performed on Quant Studio 6 flex. The reported limit of detection is 1,000 copies/mL. After April 7, 2020, patients were tested using the GeneXpert Dx Xpress SARS-CoV-2 RT-PCR assay (Cepheid). The analytical sensitivity and specificity are reported by the manufacturer as 100% (87/87 samples) and 100% (30/30 samples), with a limit of detection of 250 copies/mL or 0.0100 plaque-forming units per milliliter.<sup>21</sup> Positive SARS-CoV-2 test was considered an independent criterion for submission of placentas to pathology.

### Controls

Historical controls underwent singleton third trimester delivery with clinically indicated placental pathology examination between January 1, 2011, and June 30, 2018. Examination was at the judgment of the delivering physician. Suggested criteria for examination included abnormal placenta and/or cord on examination in the delivery room; stillbirth; intrauterine growth restriction (<10th percentile); preterm delivery of 34 weeks or less gestation; premature rupture of membranes at less than 34 weeks gestation; severe preeclampsia; clinical concern for viral infection; clinical suspicion of chorioamnionitis; clinical suspicion of abruption; history

of current/previous gestational trophoblastic disease; compromised clinical condition of neonate, including intensive care admission, cord pH less than 7.0, Apgar score of 5 or less at 5 minutes, ventilatory assistance, hematocrit less than 25%, hydrops fetalis, congenital anomalies, monochorionic twin gestation, and all higher order multiple gestations (eg, triplets); maternal cancer history (including melanoma); and retained placenta. Pathology reports were retrieved from the laboratory information system. Patients with a history of melanoma have been suggested as superior controls, as this indication is orthogonal to other pregnancy complications.<sup>22</sup> A nested cohort of patients with a history of melanoma was created from the historical controls based on the presence of the word “melanoma” in the clinical history section of their pathology report. Placental examination is indicated in all patients with a history of melanoma to examine for placental metastases. No patient in the study period had such metastases, so they may be considered a random sample of the delivering population. This study was approved by our institutional review board, STU00207907 (historical and melanoma controls) and STU00212232 (COVID-19 cases).

### Examination

Placentas underwent routine clinical examination consisting of storage at 4°C prior to fixation, fixation in 10% buffered formalin, photographs of the maternal and fetal surface, measurement, trimmed weight, sectioning, and examination of the cut surface. Sections submitted included 2 of membrane rolls, at least 2 of umbilical cord, 3 maternal surface biopsies, 2 full thickness sections, and representative sampling of any lesions present. Sections underwent routine processing, embedding, sectioning at 5 µm and staining with H&E. Histologic examination was performed by subspecialty perinatal pathologists who were aware of the COVID-19 status. Cases were reviewed by 2 pathologists to confirm the diagnoses.

### Python/NLTK/Regular Expression Pipeline

Our hospital’s laboratory information system (Cerner Build List Id: 2014.08.1.36) was searched for all second and third trimester placentas between July 2011 and June 2018. Maternal age, gestational age, and delivery mode were extracted from the clinical history within the pathology request. Final diagnoses are listed as a series of relatively self-contained bullet points, which were searched for key phrases to identify cases. To do this, individual bullet points were tokenized and stemmed using the Porter stemmer function of the Natural Language Toolkit (NLTK) package (version 3.3) on Python (version 3.6.5).

Stems characteristic of specific diagnoses were tested, eg, “fibrinoid necros” for fibrinoid necrosis. A case was identified when all stems were present, and word order was ignored. Manual review was performed of 20 to 60 bullet points to test the accuracy of case identification. Over 65 diagnoses were tested for, with overall sensitivity, specificity, and accuracy of 0.97, 0.97, and 0.98, respectively. Frequencies of parent categories, eg, decidual arteriopathy include diagnoses not seen in the COVID-19 patients and thus not listed, eg, atherosclerosis without associated fibrinoid necrosis, so the number of patients in parent categories may be greater than the number of patients in listed child categories.

### Analysis

Comparisons were made between placentas of women with COVID-19 and historical controls as well as between placentas of women with COVID-19 and women with placental evaluation for a history of melanoma. The placenta from 1 second trimester miscarriage was excluded from statistical analysis. Quantities are reported as mean ± standard deviation. Categorical data are reported as actual values or percentages. Comparisons of categorical data with patients with history of melanoma use Fisher exact test. Comparisons of categorical data with the larger control set use  $\chi^2$  with Yates correction. *P* values are not corrected for multiple comparisons.

### Results

Sixteen placentas from patients with SARS-CoV-2 were examined (Table 1). Fourteen patients delivered at term (37-40 weeks), 1 delivered at 34 weeks, and 1 represented a 16-week intrauterine fetal demise (IUFD). Five placentas were small for gestational age, 1 significantly (298 g, expected 409-589 g). One placenta was slightly large for gestational age (612 g, expected 426-611 g). Indications for pathologic evaluation included only positive SARS-CoV-2 in 13 of 16 cases; 1 case additionally had a history of cholestasis of pregnancy and gestational diabetes, another had a history of pregnancy-induced hypertension, and 1 was the aforementioned IUFD.

Four patients had COVID-19 remote from delivery (ie, infection diagnosed between 25-34 days prior to delivery), 2 were diagnosed 6 and 7 days prior to delivery, and the remaining 10 were diagnosed on presentation to labor and delivery (Table 2). Ten of 16 patients were symptomatic. Two of 16 required oxygen. No patients were intubated and there were no maternal deaths. Apgar scores of liveborn infants at 1 minute were 8 (7/15) or 9 (8/15).

**Table 1**  
**Clinical Histories of Cases**

Case	Gestational Age (wk)	Maternal Age (y)	Indication for Exam	Placenta Weight (g)	Small / Large for Gestational Age
1	16	26	IUFD, CoV, PPRM	Frag	NA
2	37	34	CoV, PIH	423	
3	38	33	CoV	357	SGA
4	39	39	CoV	463	
5	39	31	CoV	424	SGA
6	39	23	CoV, asthma	394	SGA
7	40	28	CoV	Frag	NA
8	38	26	CoV	298	SGA
9	38	30	CoV	544	
10	40	34	CoV	400	SGA
11	34	30	CoV, asthma	416	
12	37	33	CoV	542	
13	39	30	CoV	606	
14	40	31	CoV	557	
15	39	41	CoV	612	LGA
16	37	37	CoV, Chol, GDM	519	

Chol, cholestasis of pregnancy; CoV, SARS-CoV-2 infection; Frag, fragmented placenta, weight unreliable; GDM, gestational diabetes mellitus; IUFD, intrauterine fetal demise; LGA, large for gestational age; NA, not applicable; PIH, pregnancy-induced hypertension; PPRM, preterm premature rupture of the membranes; SGA, small for gestational age.

All 5-minute Apgar scores were 9. Ten of 15 liveborn infants were discharged on day of life (DOL) 1 or 2. Two infants were discharged on DOL 3 and two on DOL 4. The premature infant remains admitted at the time of revision (DOL 14). There were no neonatal deaths. All infants were negative for SARS-CoV-2 by nasopharyngeal and throat swab.

The 16-week IUFD occurred in an asymptomatic woman who tested positive for SARS-CoV-2 at the time of admission to labor and delivery. Placental pathology in this case demonstrated retroplacental hematoma and villous edema; villous maturation was appropriate for gestational age. There was no acute or chronic inflammation noted. This case is not included in the cohort for statistical analysis, as the control population is of third trimester deliveries only.

Fifteen cases were compared with the 2 control populations described previously. Features of maternal vascular malperfusion (MVM) were present in 12/15 cases, significantly higher than melanoma (59/215,  $P = .001$ ) (Table 3), Table 4, and Image 1 as well as all controls (7,754/17,479,  $P = .046$ ). Features included central (1/15) and peripheral (3/15) villous infarctions, villous agglutination (3/15), and accelerated villous maturation (2/15). Decidual arteriopathy occurred in 7/15 cases, including atherosclerosis and fibrinoid necrosis of maternal vessels (3/15) and mural hypertrophy of membrane arterioles (5/15).

Peripheral infarctions, decidual arteriopathy, atherosclerosis and fibrinoid necrosis, and mural hypertrophy were more common in COVID-19 cases than in placentas of women with a history of melanoma ( $P = .01$ ,

$P < .001$ ,  $P = .002$ ,  $P = .01$ , respectively), while decidual arteriopathy, atherosclerosis and fibrinoid necrosis and mural hypertrophy were more common in COVID-19 cases than in all historical controls ( $P < .001$ ,  $P = .001$ , and  $P = .001$ , respectively). Formal “topline” diagnoses of MVM were made in 2 of 15 cases, more commonly than in women with a history of melanoma ( $P = .012$ ), but not all historical controls.

Features of fetal vascular malperfusion (FVM) were present in 12 of 15 cases, not significantly different from melanoma (121/215,  $P = .10$ ) or all historical (9,596/17,479,  $P = .09$ ) controls. Specifically, 4 of 15 COVID-19 placentas showed clustered avascular villi, 1 of 15 showed mural fibrin deposition in fetal vessels, 4 of 15 showed delayed villous maturation, and 3 of 15 showed a hypercoiled umbilical cord. Four of 15 placentas showed chorangiomas, which was increased relative to all historical controls (889/17,479,  $P = .001$ ), as well as melanoma controls (11/215,  $P = .011$ ).

One COVID-19 case showed acute inflammatory pathology (AIP) including histologic chorioamnionitis and umbilical arteritis, corresponding to maternal and fetal inflammatory response stages of 2 and 2, respectively. The rate of AIP is significantly lower than both melanoma (114/215,  $P = .001$ ) and all historical (9,879/17,479,  $P = .0003$ ) controls.

Two COVID-19 cases showed chronic inflammatory pathology (CIP), both with low-grade chronic lymphocytic villitis and chronic deciduitis with plasma cells. These rates are not significantly different from melanoma (62/215,  $P = .246$ ) or all historical (6,739/17,479,  $P = .082$ ) controls.

**Table 2**  
**COVID-19 Disease Course**

Case	Diagnosis to Delivery Interval (d)	Symptom Onset to Delivery Interval (d)	Oxygen Use	Apgar @1 min	Apgar @5 min	Infant CoV Result	Infant DOL Discharge
1	0	asymptomatic		0	0	ND	NA
2	0	asymptomatic		9	9		3
3	0	asymptomatic		9	9	–	2
4	0	14		8	9	–	2
5	0	asymptomatic		9	9	–	2
6	0	5		9	9	–	4
7	0	1		9	9	–	2
8	1	9		9	9	–	4
9	1	asymptomatic		8	9	–	2
10	2	asymptomatic		9	9	–	2
11	6	7	x	9	9	–	Inpatient
12	7	2	x	8	9	–	2
13	25	29		8	9	–	2
14	25	28		8	9	–	1
15	28	37		8	9	–	3
16	34	38		8	9	–	2

asymptomatic, asymptomatic; CoV, SARS-CoV-2 nucleic acid test; DOL, day of life; NA, not applicable; ND, not done.

Additional findings in the COVID-19 cases included 3 cases of basal plate with adherent myometrial fibers, 2 cases of microscopic accreta, 3 with increased perivillous fibrin deposition, and 1 with increased circulating nucleated RBCs. Five cases demonstrated villous edema, significantly increased from both melanoma (12/215,  $P = .049$ ) and all historical (1,532/17,479,  $P = .046$ ) controls. Six of 15 COVID-19 cases contained intervillous thrombi, significantly increased relative to melanoma (18/215,  $P = .002$ ) and all historical (1,601/17,479,  $P = .0002$ ) controls.

## Discussion

This is the first case series in the English language literature of placental pathology in SARS-CoV-2 infection and COVID-19 of which we are aware. The most significant finding is an increase in the rate of features of MVM, most prominently decidual arteriopathy including atherosclerosis and fibrinoid necrosis and mural hypertrophy of membrane arterioles. MVM, previously known as maternal vascular underperfusion, has been associated with oligohydramnios, fetal growth restriction, preterm birth, and stillbirth.<sup>23-26</sup> Maternal hypertensive disorders, including gestational hypertension and preeclampsia, are the major risk factors for MVM.<sup>27,28</sup> Surprisingly, only 1 of the patients in our study was hypertensive. The patients in this study differed from typical MVM patients in other ways. The most commonly seen feature of MVM in controls is accelerated villous maturation, which was (nonsignificantly) less common in COVID-19. While features of MVM were overall more common in COVID-19

patients, only 2, including the patient with hypertension, had more than 3 features, our general threshold for a formal “top line” diagnosis of MVM. Thus, while MVM is a useful organizing feature, decidual arteriopathy specifically appears most strongly related to COVID-19, suggesting a different pathophysiology for a different etiology. The histologic changes of MVM are thought to represent some chronicity, though exact timing is unknown, and these features can be seen in women who develop preeclampsia only during or after childbirth. Whether systemic vascular changes due to maternal COVID-19 are responsible for the histologic changes of MVM cannot be determined.

As SARS-CoV-2 is a virus, it might be expected to induce inflammation. CIP and in particular chronic villitis may be caused directly by some viral infections, such as cytomegalovirus.<sup>10</sup> There is a case report of histiocytic intervillitis, another form of CIP with a high rate of adverse outcomes, in a second trimester miscarriage due to COVID-19.<sup>18</sup> Chronic villitis also shows seasonality, suggesting a link to circulating viruses, either causing direct infection or loss of tolerance.<sup>29</sup> In that context, it is relevant that neither AIP nor CIP were increased in COVID-19 patients relative to the controls. Indeed, both categories of disease were less prevalent in COVID-19 patients, AIP significantly so. There were no cases in our series of histiocytic intervillitis, including the patient with IUFD. None of the COVID-19 patients in our study were severely ill or undergoing a “cytokine storm,” and it may be possible that CIP, including histiocytic intervillitis, could be induced in those cases of systemic inflammation.

**Table 3**  
**Diagnoses**

Diagnosis	Patient															
	1	2	3	4	5	6	7	8	9	10	11	12	13	14	15	16
Maternal vascular malperfusion (MVM)																
MVM—formal diagnosis		x									x					
Central villous infarction								x								
Peripheral villous infarction		x			x									x		
Villous agglutination								x			x			x		
Accelerated villous maturation		x									x					
Decidual arteriopathy—any		x	x	x		x	x			x	x					
Atherosclerosis and fibrinoid necrosis		x	x								x					
Mural hypertrophy of membrane arterioles		x		x				x		x	x					
Absence of spiral artery remodeling								x			x					
Retroplacental hematoma	x												x			
MVM—any individual features	x	x	x	x	x	x	x	x		x	x		x	x		
Fetal vascular malperfusion (FVM)																
FVM—formal diagnosis		x														
FVM—high grade		x														
Clustered avascular villi		x			x					x					x	
Fetal vessel—mural fibrin			x													
Delayed villous maturation		x					x		x					x		
Hypercoiled umbilical cord						x									x	x
Chorangiosis				x						x		x				x
FVM—any individual feature		x	x	x	x	x	x		x	x		x		x	x	x
Acute inflammatory pathology (AIP)																
Maternal inflammatory response stage 2																x
Fetal inflammatory response stage 2																x
AIP—any features																x
Chronic inflammatory pathology (CIP)																
Chronic villitis—low grade											x			x		
Chronic deciduitis with plasma cells											x			x		
CIP—any features											x			x		
Other placental findings																
Basal plate with attached myometrial fibers			x					x			x					
Microscopic accreta							x									x
Villous edema	x								x	x		x				x
Increased perivillous fibrin				x				x			x					
Intervillous thrombus				x	x			x				x		x		x
Increased circulating nucleated RBCs													x			
Membranes with hemorrhage							x					x				

COVID-19 patients showed a significant increase in intervillous thrombi. The intervillous space usually contains flowing maternal blood, yet 85% of thrombi are suggested to be of fetal origin.<sup>30</sup> Intervillous thrombi are generally considered incidental findings, but have been associated with maternal hypertensive disorders or coincident infarctions.<sup>31-33</sup> In the context of research suggesting an increase of thrombotic and thromboembolic disorders in COVID-19, these may represent placental formation or deposition of thrombi in response to the virus.<sup>34-36</sup>

The increased incidence of chorangiosis is notable as well. Chorangiosis is associated with decreased maternal oxygen saturation<sup>37,38</sup>; it is more commonly seen in women living at high altitudes,<sup>39</sup> as well as for unknown reasons, in women with diabetes.<sup>40</sup> Two of the cases with chorangiosis in the current study represent

asymptomatic women, while 1 is from a woman with 1 week of symptomatic COVID-19, and the fourth is from a woman who recovered from symptomatic COVID-19 diagnosed initially 34 days prior to delivery. The latter woman also had gestational diabetes, complicating interpretation of the findings. While the association between a respiratory virus and a finding sometimes seen in maternal hypoxia is interesting, the small sample size and confounding factors make it difficult to draw any conclusions at this time.

Comparison with the reported features of 3 placentas in the Chinese language literature are of interest.<sup>16</sup> In the previous study, the 3 patients had variably increased perivillous fibrin deposition in comparison to only 1 in our series. We also report villous infarction in several placentas, reinforcing the significance of MVM

**Table 4**  
**Comparison of SARS-CoV-2 Patients With Controls<sup>a</sup>**

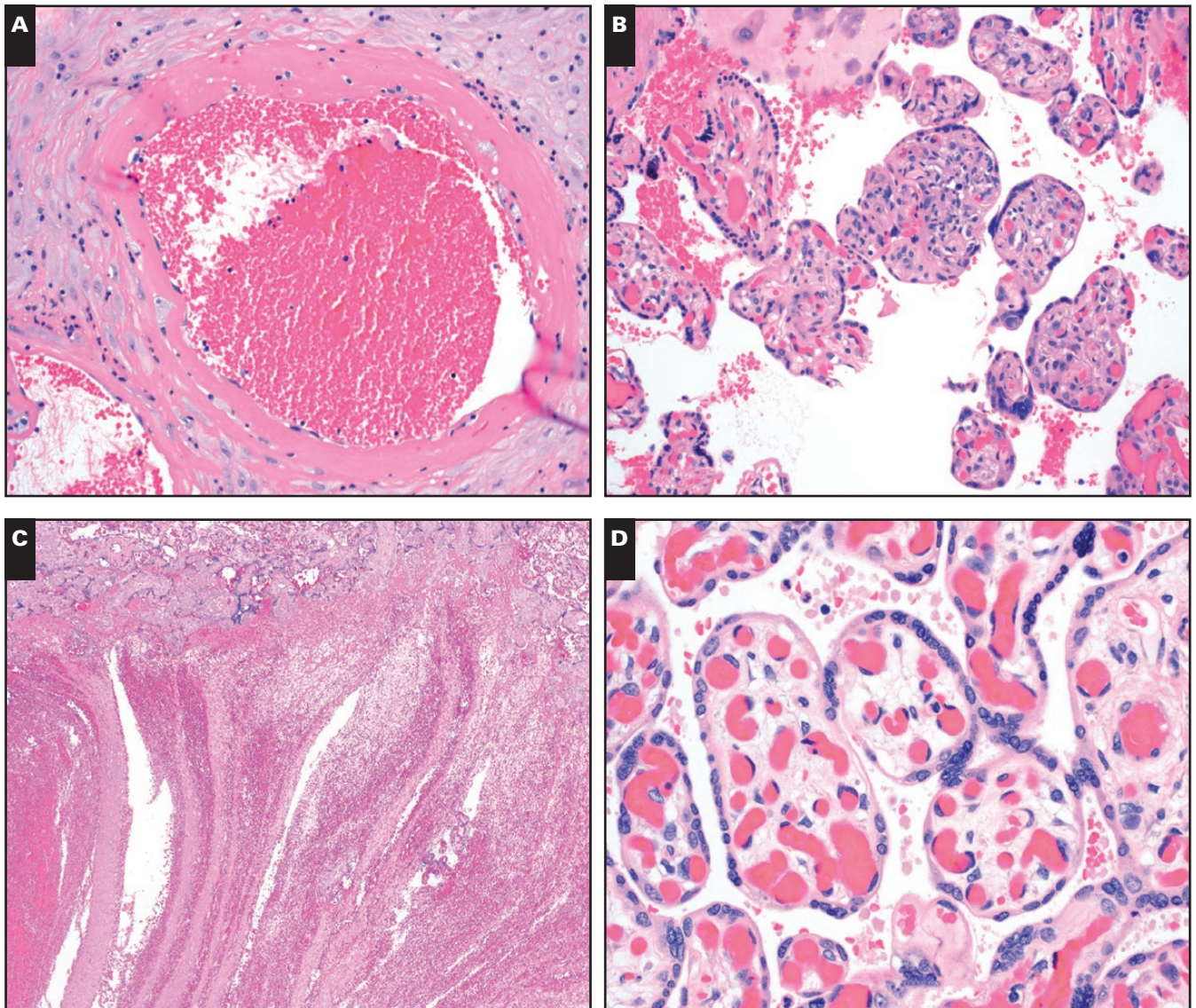
Feature	Cases (n = 15) <sup>b</sup>	Melanoma controls (n = 215) <sup>b</sup>	All historical controls (n = 17,479) <sup>b</sup>	Odds Ratio vs Melanoma	Odds Ratio vs All Historical	P Value vs Melanoma	P Value vs All Historical
Preterm delivery	1 (7)	9 (4)	4,143 (24)	1.6	0.2	.498	.212
SGA	5 (36)	63 (25)	7,672 (40)	1.7	0.8	.354	.984
LGA	1 (7)	22 (9)	1,460 (8)	0.8	0.9	1.000	.956
Maternal vascular malperfusion (MVM)							
MVM—formal diagnosis	2 (13)	1 (0)	1,192 (7)	32.9	2.1	<b>.012</b>	.626
Central villous infarction	1 (7)	1 (0)	239 (1)	15.3	5.2	.126	.514
Peripheral villous infarction	3 (20)	5 (2)	3,072 (18)	10.5	1.2	<b>.010</b>	.805
Villous agglutination	3 (20)	12 (6)	1,483 (8)	4.2	2.7	.064	.256
Accelerated villous maturation	2 (13)	38 (18)	5,346 (31)	0.7	0.3	1.000	.242
Decidual arteriopathy	7 (47)	17 (8)	2,816 (16)	5.4	2.4	<b>&lt;.001</b>	<b>.004</b>
Atherosclerosis and fibrinoid necrosis	3 (20)	0 (0)	264 (2)	Infinity	16.3	<b>&lt;.001</b>	<b>&lt;.001</b>
Mural hypertrophy of membrane arterioles	5 (33)	9 (4)	1,365 (8)	11.4	5.9	<b>.001</b>	<b>.001</b>
Absence of spiral artery remodeling	2 (13)	6 (3)	1,626 (9)	5.4	1.5	.089	.926
Retroplacental hematoma	1 (7)	2 (1)	700 (4)	7.6	1.7	.184	.599
MVM—any individual features	11 (73)	59 (27)	7,754 (44)	7.3	3.4	<b>.001</b>	<b>.046</b>
Fetal vascular malperfusion (FVM)							
FVM—formal diagnosis	1 (7)	16 (7)	1,674 (10)	0.9	0.7	1.000	.702
FVM—high grade	1 (7)	4 (2)	543 (3)	3.8	2.2	.288	.960
Clustered avascular villi	4 (27)	62 (29)	5,164 (30)	0.9	0.9	1.000	.807
Fetal vessel—mural fibrin	14 (93)	22 (10)	1,123 (6)	122.8	203.9	1.000	.970
Delayed villous maturation	4 (27)	9 (4)	617 (4)	8.3	9.9	<b>.006</b>	<b>&lt;.001</b>
Hypercoiled umbilical cord	3 (20)	47 (22)	4,392 (25)	0.9	0.7	1.000	.873
Chorangiosis	4 (27)	11 (5)	889 (5)	6.7	6.8	<b>.011</b>	<b>.001</b>
FVM—any individual feature	12 (80)	121 (56)	9,596 (55)	3.1	3.3	.104	.090
Acute inflammatory pathology							
Maternal inflammatory response stage 2	1 (7)	32 (15)	5,465 (31)	0.4	0.2	.702	.076
Fetal inflammatory response stage 2	1 (7)	9 (4)	2,215 (13)	1.6	0.5	.498	.756
Any acute inflammatory pathology	1 (7)	114 (53)	9,879 (57)	0.1	0.1	<b>.001</b>	<b>&lt;.001</b>
Chronic inflammatory pathology							
Chronic villitis—low grade	2 (13)	20 (9)	1,499 (9)	1.5	1.6	.642	.844
Chronic deciduitis with plasma cells	2 (13)	24 (11)	4,128 (24)	1.2	0.5	.681	.527
Any chronic inflammatory pathology	2 (13)	62 (29)	6,739 (39)	0.4	0.2	.246	.082
Other placental findings							
Basal plate with attached myometrial fibers	3 (20)	53 (25)	3,921 (22)	0.8	0.9	1.000	.821
Microscopic accreta	2 (13)	18 (8)	1,558 (9)	1.7	1.6	.626	.883
Villous edema	4 (27)	19 (9)	1,532 (9)	3.8	3.8	<b>.049</b>	<b>.046</b>
Increased perivillous fibrin	3 (20)	27 (13)	2,632 (15)	1.7	1.4	.423	.862
Intervillous thrombus	6 (40)	18 (8)	1,601 (9)	7.3	6.6	<b>.002</b>	<b>&lt;.001</b>
Increased circulating nucleated RBCs	1 (7)	2 (1)	553 (3)	7.6	2.2	.184	.971
Membranes with hemorrhage	2 (13)	32 (15)	2,248 (13)	0.9	1.0	1.000	.957

<sup>a</sup>Bold *P* values indicate significant results.

<sup>b</sup>Data are given as No. (%).

lesions. Finally, the previous study reported 1 case of chorangioma, which may be incidental but has been associated with both FVM and MVM changes,<sup>41,42</sup> and may have a relationship to chorangiomas, which was significantly increased in the present study.

Our cohort includes a 16-week IUFD, which was excluded from the subsequent statistical analysis. Placental pathology demonstrated villous edema and a retroplacental hematoma. Retroplacental hematomas are a feature of MVM; however in this case it may have been procedural.<sup>24</sup>



**Image 1** Selected pathology from coronavirus disease 2019 patients. **A**, Maternal arteriole with atherosclerosis and fibrinoid necrosis ( $\times 20$ ). **B**, Small focus of fetal villi with lymphocytic villitis ( $\times 20$ ). **C**, Intervillous thrombus showing lines of Zahn ( $\times 5$ ). **D**, Fetal villi with chorangiomas and edema ( $\times 40$ ).

In comparison, 2 second trimester miscarriages have been reported in patients with COVID-19.<sup>17,18</sup> The placenta in the first case showed mildly increased perivillous fibrin and acute subchorionitis. SARS-CoV-2 nucleic acid testing was negative in the fetus but positive in placenta. Bacterial culture and PCR were negative, leading the authors to suggest the acute inflammatory response is related to SARS-CoV-2. We do not see an increased incidence of AIP in our IUFD or overall in our cases. Low-stage inflammation is common in laboring deliveries and investigation for bacteria is frequently negative.<sup>43,44</sup> Notably the second IUFD showed histiocytic intervillitis, an unrelated form of CIP.<sup>18</sup> A larger case series is needed to define the relationship between SARS-CoV-2, acute inflammation, and IUFD.

None of the placentas in our study were tested for SARS-CoV-2 viral RNA or protein. Per hospital protocol, all live infants born to SARS-CoV-2 mothers were tested by a nasopharyngeal and throat swab at greater than 24 hours of life a minimum of once and up to twice for SARS-CoV-2, and none were positive. While both second trimester miscarriage case reports showed either SARS-CoV-2 RNA<sup>17</sup> or spike protein,<sup>18</sup> the broader consensus shows the placenta is generally negative for COVID-19 and vertical transmission is, at most, very rare.<sup>45</sup> This corroborates existing evidence that vertical transmission of the virus is uncommon and suggests that placental changes, if caused by COVID-19, are related to maternal infection and inflammation rather than fetal infection.



In determining which placental anomalies are attributable to SARS-CoV-2 infection, we would argue that statistically significant associations identified in controlled studies, such as this one, are the appropriate first step. The scope of placental anomalies is vast, and many anomalies are frequently seen across a variety of indications for placental examination, emphasizing the need for appropriate controls.<sup>41,46</sup>

This study is subject to some limitations. The relatively low number of patients limits our assessment of low frequency or variable outcomes. We have grouped symptomatic, asymptomatic, and recovered patients; a larger study could treat these groups separately. One strength of our study is the use of 2 distinct control groups. Placentas are only submitted for clinical examination when there is an indication—usually diseases in pregnancy or complications of labor and delivery. Melanoma history is an indication for placental examination but is considered independent of pregnancy outcome, and therefore some have advocated using these patients as a control. Nonetheless, more appropriate control populations could include patients with influenza-like illness with negative SARS-CoV-2 testing and asymptomatic, COVID-19 negative patients delivering at a similar time. Finally, our study does not formally test causality or the direct relationship between SARS-CoV-2 infection and development of placental pathology. It is possible that viral infection directly leads to placental pathology or that there is a common underlying cause for both placental lesions and susceptibility to SARS-CoV-2.

## Conclusions

We report placental pathology from 16 patients with SARS-CoV-2 infection. No pathognomonic features are identified; however, there are increased rates of maternal vascular malperfusion features and intervillous thrombi, suggesting a common theme of abnormal maternal circulation, as well as an increased incidence of chorangiomas. These findings provide mechanistic insight into the observed epidemiologic associations between COVID-19 in pregnancy and adverse perinatal outcomes. Collectively, these findings suggest that increased antenatal surveillance for women diagnosed with SARS-CoV-2 may be warranted.

Corresponding author: Jeffery A. Goldstein, MD, PhD; [ja.goldstein@northwestern.edu](mailto:ja.goldstein@northwestern.edu).

Acknowledgments: The authors thank Dr Kruti Maniar (Northwestern Department of Pathology), staff in the

Obstetric-COVID unit at Prentice Women's Hospital, and the Northwestern Memorial Hospital Department of Pathology. Patients were tracked using REDCap supported by NIH UL1TR001422.

## References

- World Health Organization. Consensus document on the epidemiology of severe acute respiratory syndrome (SARS). 2003. <https://www.who.int/csr/sars/WHOconsensus.pdf?ua=1>.
- Schwartz DA. An analysis of 38 pregnant women with COVID-19, their newborn infants, and maternal-fetal transmission of SARS-CoV-2: maternal coronavirus infections and pregnancy outcomes. *Arch Pathol Lab Med*. 2020;arpa.2020-0901-SA.
- Schwartz DA, Graham AL. Potential maternal and infant outcomes from (Wuhan) coronavirus 2019-nCoV infecting pregnant women: lessons from SARS, MERS, and other human coronavirus infections. *Viruses*. 2020;12(2).
- Di Mascio D, Khalil A, Saccone G, et al. Outcome of coronavirus spectrum infections (SARS, MERS, COVID-19) during pregnancy: a systematic review and meta-analysis. *Am J Obstet Gynecol MF*. 2020:100107.
- Liu D, Li L, Wu X, et al. Pregnancy and perinatal outcomes of women with coronavirus disease (COVID-19) pneumonia: a preliminary analysis. *AJR Am J Roentgenol*. 2020:1-6.
- Yang H, Sun G, Tang F, et al. Clinical features and outcomes of pregnant women suspected of Coronavirus disease 2019. *J Infect*. 2020:S0163445320302127.
- Yu N, Li W, Kang Q, et al. Clinical features and obstetric and neonatal outcomes of pregnant patients with COVID-19 in Wuhan, China: a retrospective, single-centre, descriptive study. *Lancet Infect Dis*. 2020:S1473309920301766.
- Zaigham M, Andersson O. Maternal and perinatal outcomes with COVID-19: a systematic review of 108 pregnancies. *Acta Obstet Gynecol Scand*. 2020;aogs.13867.
- Assiri A, Abedi GR, Al Masri M, et al. Middle East respiratory syndrome Coronavirus infection during pregnancy: a report of 5 cases from Saudi Arabia. *Clin Infect Dis*. 2016;63:951-953.
- Garcia AG, Fonseca EF, Marques RL, et al. Placental morphology in cytomegalovirus infection. *Placenta*. 1989;10:1-18.
- Martines RB, Bhatnagar J, Keating MK, et al. Notes from the field: evidence of Zika virus infection in brain and placental tissues from two congenitally infected newborns and two fetal losses—Brazil, 2015. *MMWR Morb Mortal Wkly Rep*. 2016;65:159-160.
- Martines RB, Bhatnagar J, de Oliveira Ramos AM, et al. Pathology of congenital Zika syndrome in Brazil: a case series. *Lancet*. 2016;388:898-904.
- Ribeiro CF, Silami VG, Brasil P, et al. Sick-cell erythrocytes in the placentas of dengue-infected women. *Int J Infect Dis*. 2012;16:e72.
- Ng WF, Wong SF, Lam A, et al. The placentas of patients with severe acute respiratory syndrome: a pathophysiological evaluation. *Pathology*. 2006;38:210-218.
- Jeong SY, Sung SI, Sung JH, et al. MERS-CoV infection in a pregnant woman in Korea. *J Korean Med Sci*. 2017;32:1717-1720.

16. Chen S, Huang B, Luo DJ, et al. Pregnant women with new coronavirus infection: a clinical characteristics and placental pathological analysis of three cases [in Chinese]. *Zhonghua Bing Li Xue Za Zhi*. 2020;49:E005.
17. Baud D, Greub G, Favre G, et al. Second-trimester miscarriage in a pregnant woman with SARS-CoV-2 infection. *JAMA*. 2020. <https://jamanetwork.com/journals/jama/fullarticle/2765616>.
18. Hosier H, Farhadian S, Morotti R, et al. SARS-CoV-2 infection of the placenta. *medRxiv*. 2020;2020.04.30.20083907.
19. Harris PA, Taylor R, Thielke R, et al. Research electronic data capture (REDCap)—a metadata-driven methodology and workflow process for providing translational research informatics support. *J Biomed Inform*. 2009;42:377-381.
20. Centers for Disease Control and Prevention. CDC 2019-novel coronavirus (2019-nCoV) real-time RT-PCR diagnostic panel instructions for use. 2020. <https://www.fda.gov/media/134922/download>.
21. Cepheid. Xpert® Xpress SARS-CoV-2 instructions for use for labs. 2020. <https://www.fda.gov/media/136314/download>.
22. Ernst LM, Linn RL, Minturn L, et al. Placental pathologic associations with morbidly adherent placenta: potential insights into pathogenesis. *Pediatr Dev Pathol*. 2017;20:387-393.
23. Zhou YY, Ravishankar S, Luo G, et al. Predictors of high-grade and other clinically significant placental findings by indication for submission in singleton placentas from term births. *Pediatr Dev Pathol*. 2020;1093526620904801.
24. Khong TY, Mooney EE, Ariel I, et al. Sampling and definitions of placental lesions: Amsterdam Placental Workshop Group Consensus Statement. *Arch Pathol Lab Med*. 2016;140:698-713.
25. Redline RW. Severe fetal placental vascular lesions in term infants with neurologic impairment. *Am J Obstet Gynecol*. 2005;192:452-457.
26. Chen A, Roberts DJ. Placental pathologic lesions with a significant recurrence risk - what not to miss! *APMIS*. 2018;126:589-601.
27. Bustamante Helfrich B, Chilukuri N, He H, et al. Maternal vascular malperfusion of the placental bed associated with hypertensive disorders in the Boston Birth Cohort. *Placenta*. 2017;52:106-113.
28. Weiner E, Feldstein O, Tamayev L, et al. Placental histopathological lesions in correlation with neonatal outcome in preeclampsia with and without severe features. *Pregnancy Hypertens*. 2018;12:6-10.
29. Freedman AA, Goldstein JA, Miller GE, et al. Seasonal variation of chronic villitis of unknown etiology. *Pediatr Dev Pathol*. 2019;1093526619892353.
30. Kaplan C, Blanc WA, Elias J. Identification of erythrocytes in intervillous thrombi: a study using immunoperoxidase identification of hemoglobins. *Hum Pathol*. 1982;13:554-557.
31. Pathak S, Sebire NJ, Hook L, et al. Relationship between placental morphology and histological findings in an unselected population near term. *Virchows Arch*. 2011;459:11-20.
32. Moldenhauer JS, Stanek J, Warshak C, et al. The frequency and severity of placental findings in women with preeclampsia are gestational age dependent. *Am J Obstet Gynecol*. 2003;189:1173-1177.
33. Becroft DM, Thompson JM, Mitchell EA. Placental infarcts, intervillous fibrin plaques, and intervillous thrombi: incidences, cooccurrences, and epidemiological associations. *Pediatr Dev Pathol*. 2004;7:26-34.
34. Klok FA, Kruip MJHA, van der Meer NJM, et al. Incidence of thrombotic complications in critically ill ICU patients with COVID-19. *Thromb Res*. 2020. doi: [10.1016/j.thromres.2020.04.013](https://doi.org/10.1016/j.thromres.2020.04.013).
35. Helms J, Tacquard C, Severac F, et al. High risk of thrombosis in patients with severe SARS-CoV-2 infection: a multicenter prospective cohort study. *Intensive Care Med*. 2020. doi: [10.1007/s00134-020-06062-x](https://doi.org/10.1007/s00134-020-06062-x).
36. Cui S, Chen S, Li X, et al. Prevalence of venous thromboembolism in patients with severe novel coronavirus pneumonia. *J Thromb Haemost*. 2020. doi: [10.1111/jth.14830](https://doi.org/10.1111/jth.14830).
37. Akbulut M, Sorkun HC, Bir F, et al. Chorangiomas: the potential role of smoking and air pollution. *Pathol Res Pract*. 2009;205:75-81.
38. Altshuler G. Chorangiomas. An important placental sign of neonatal morbidity and mortality. *Arch Pathol Lab Med*. 1984;108:71-74.
39. Soma H, Watanabe Y, Hata T. Chorangiomas and chorangioma in three cohorts of placentas from Nepal, Tibet, and Japan. *Reprod Fertil Dev*. 1995;7:1533-1538.
40. Daskalakis G, Marinopoulos S, Krielesi V, et al. Placental pathology in women with gestational diabetes. *Acta Obstet Gynecol Scand*. 2008;87:403-407.
41. Heerema-McKenney A, Popek E, De Paepe M. *Diagnostic Pathology: Placenta*. 2nd ed. Philadelphia, PA: Elsevier; 2019.
42. Sirotkina M, Douroudis K, Westgren M, et al. Association of chorangiomas to hypoxia-related placental changes in singleton and multiple pregnancy placentas. *Placenta*. 2016;39:154-159.
43. Romero R, Kim YM, Pacora P, et al. The frequency and type of placental histologic lesions in term pregnancies with normal outcome. *J Perinat Med*. 2018;46:613-630.
44. Mota VQ da, Prodhom G, Yan P, et al. Correlation between placental bacterial culture results and histological chorioamnionitis: a prospective study on 376 placentas. *J Clin Pathol*. 2013;66:243-248.
45. Lamouroux A, Attie-Bitach T, Martinovic J, et al. Evidence for and against vertical transmission for SARS-CoV-2 (COVID-19). *Am J Obstet Gynecol*. 2020;S000293782030524X.
46. Baergen RN. *Manual of Pathology of the Human Placenta*. 2nd ed. New York, NY: Dordrecht Heidelberg; 2011.